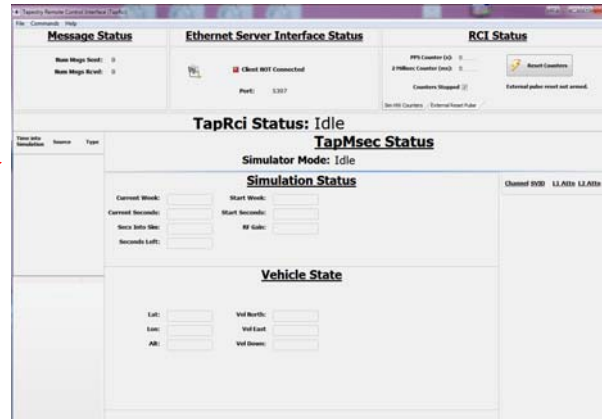
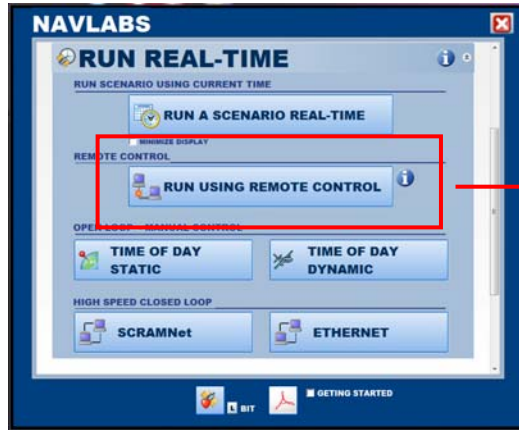


REMOTE CONTROL

CONTROL RUN SCENARIO OPERATION VIA ETHERNET / RS232 / GPIB

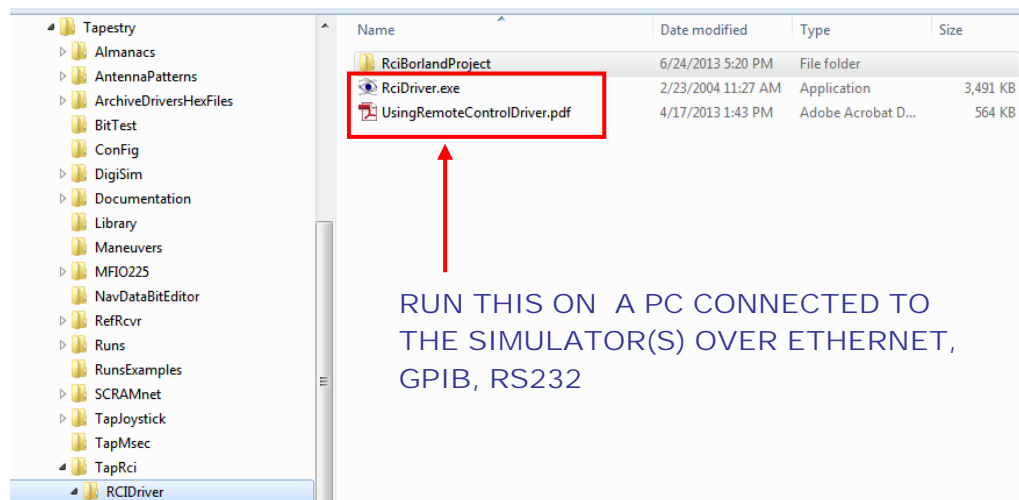


PRESSING
RUN USING REMOTE CONTROL

PRESENTS THIS SCREEN IN IDLE_MODE,
WAITING FOR A CONNECT FROM THE
SERVER

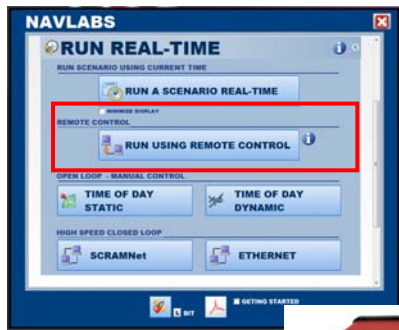
THE REMOTE CONTROL MANUAL & INTERFACE CONTROL DOCUMENT IS HERE
<C:\TAPESTRY\DOCUMENTATION\MANUALS\REMOTECONTROLINTERFACEMANUAL.PDF>

A SIMPLE TEST PROGRAM TO EXERCISE THE
REMOTE CONTROL INTERFACE IS LOCATED
AS SHOWN. COPY IT FROM THIS FOLDER ONTO
YOUR PC



RUN THIS ON A PC CONNECTED TO
THE SIMULATOR(S) OVER ETHERNET,
GPIB, RS232

MULTI-SIMULATOR NETWORK VIA TCIP



CLIENT



IP ADDRESS_1



CLIENT



IP ADDRESS_2



CLIENT



IP ADDRESS_3



CLIENT



IP ADDRESS_4



DS-400MX CHASSIS



LEGACY CHASSIS



SERVER

- START / STOP A SCENARIO
- QUERY STATUS
- SET POWER
- SET SVID

- TCIP
- GPIB
- RS232